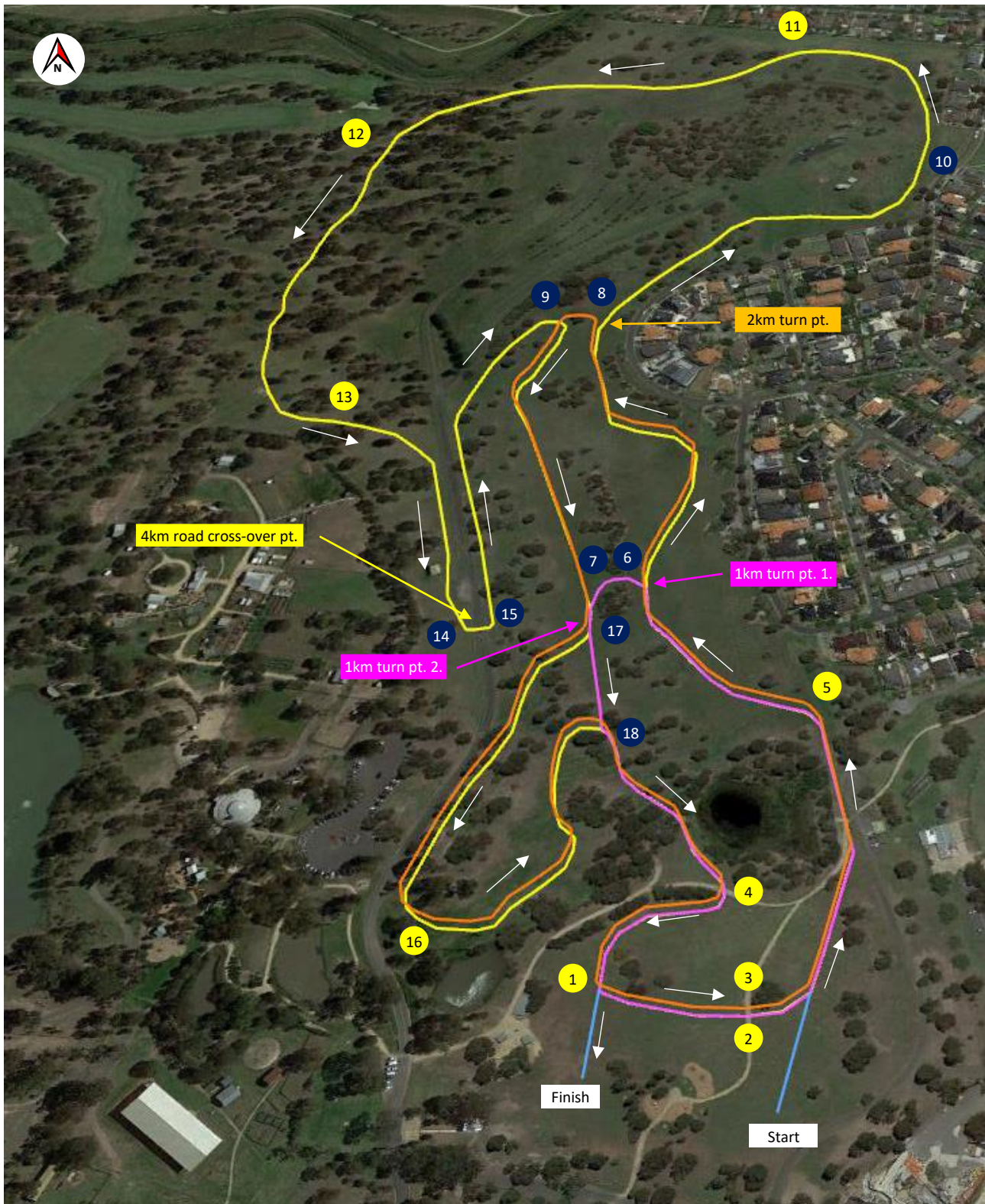


COURSE MAPS & MARSHALL POSITIONS

All Courses

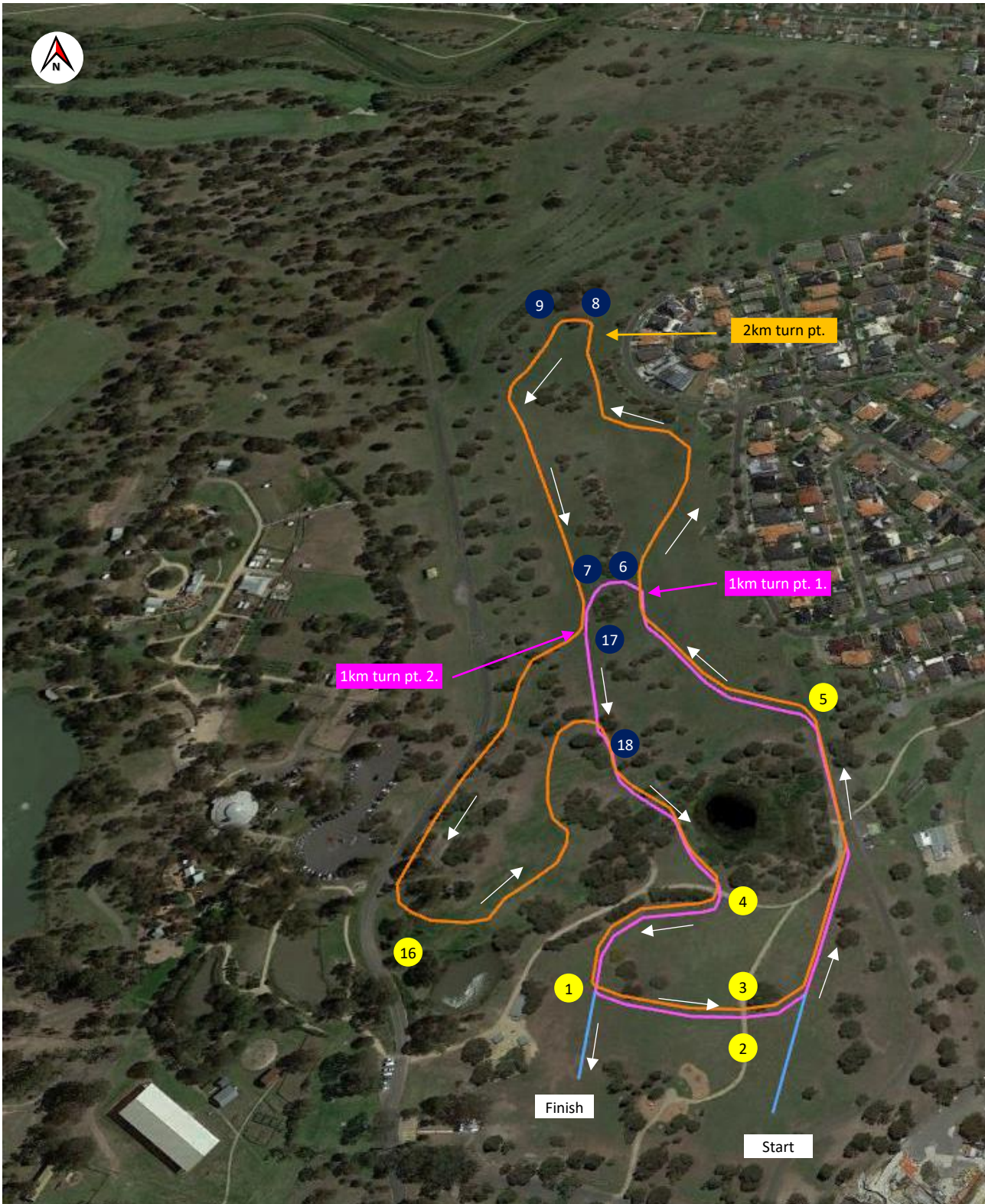


Start to loop – 75m (light blue)
 1k Loop to loop - 950m (pink)
 2k Loop to loop - 1950m (orange)
 4k Loop to loop – 3960m (yellow)
 Loop to Finish – 55m (light blue)

6 Victorian Official marshal
 16 Club Helper marshal

COURSE MAPS & MARSHALL POSITIONS

3km – 1x2km loop (red), 1x4km loop (orange)

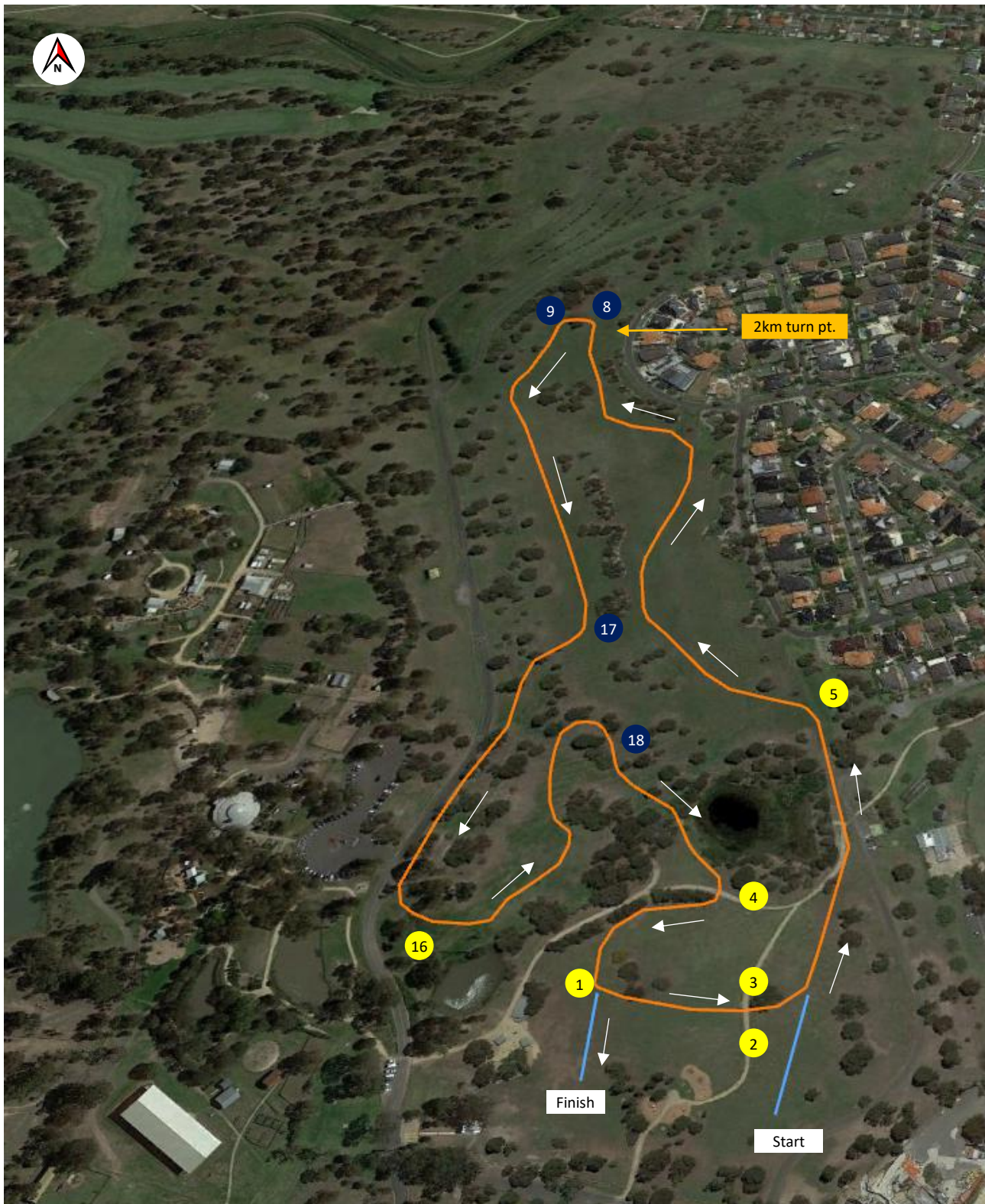


Start to loop – 75m (light blue)
1k Loop to loop - 950m (pink)
2k Loop to loop - 1950m (orange)
Loop to Finish – 55m (light blue)

6 Victorian Official marshal
16 Club Helper marshal

COURSE MAPS & MARSHAL POSITIONS

4km – 2x2km loop (orange)



Start to loop – 70m (blue)

2k Loop to loop - 1950m (orange)

2k Loop to loop - 1950m (orange)

Loop to Finish – 55m (light blue)

6

16

Victorian Official marshal
Club Helper marshal

COURSE MAPS & MARSHALL POSITIONS

6km – 1x2km loop (orange), 1x4km loop (yellow)



Start to loop – 70m (blue)

2k Loop to loop - 1950m (orange)

4k Loop to loop – 3960m (yellow)

Loop to Finish – 55m (light blue)

6

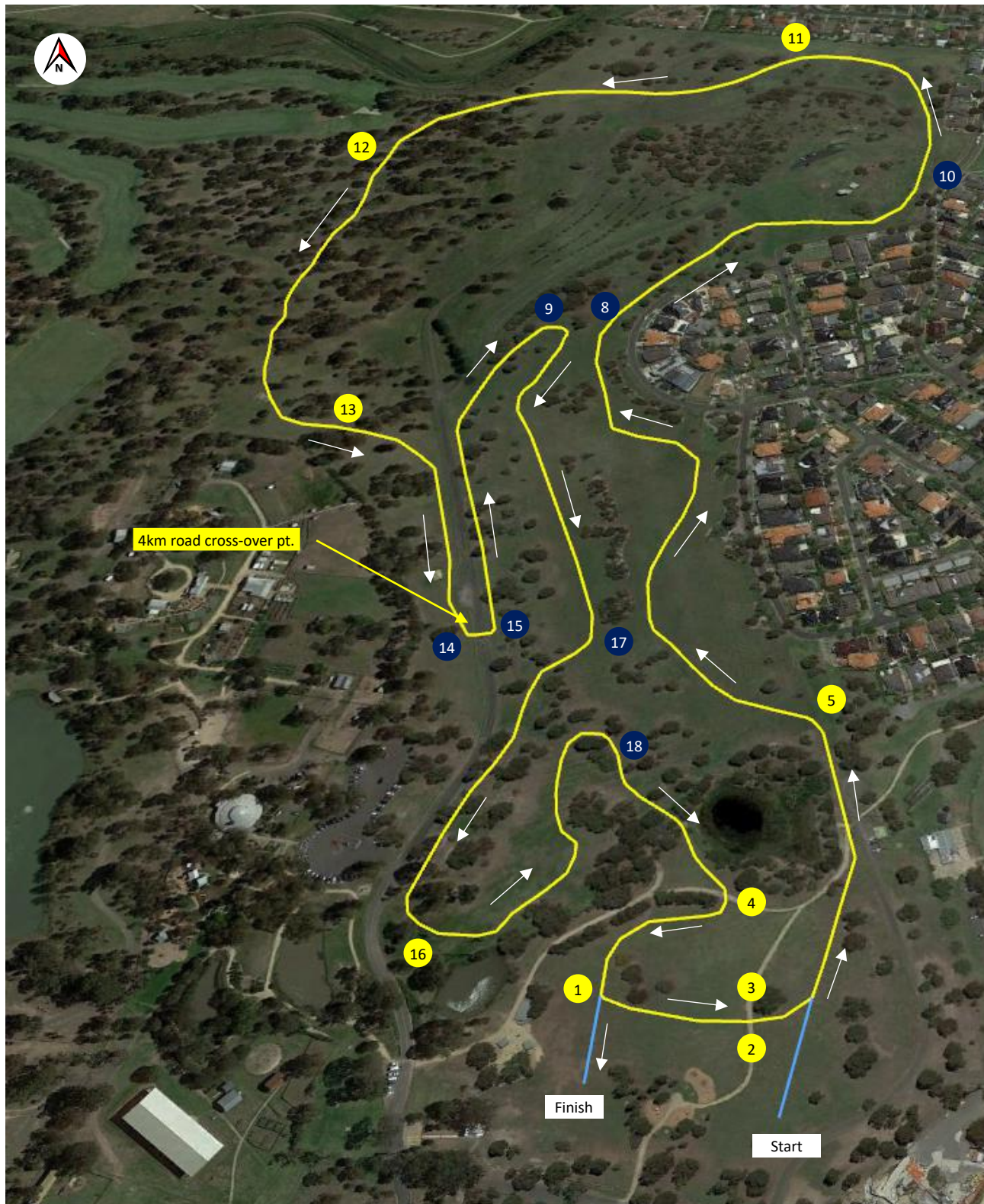
16

Victorian Official marshal

Club Helper marshal

COURSE MAPS & MARSHALL POSITIONS

8km – 2x4km loop (yellow)



Start to loop – 70m (blue)

4k Loop to loop – 3960m (yellow)

4k Loop to loop – 3960m (yellow)

Loop to Finish – 55m (light blue)

6

16

Victorian Official marshal

Club Helper marshal

COURSE MAPS & MARSHAL POSITIONS

10km -- 1x2km loop (orange), 2x4km loop (yellow)



Start to loop – 70m (blue)
 2k Loop to loop - 1950m (orange)
 4k Loop to loop – 3960m (yellow)
 4k Loop to loop – 3960m (yellow)
 Loop to Finish – 55m (light blue)

6 Victorian Official marshal
 16 Club Helper marshal